



The most powerful MDM in education

Available on



Android



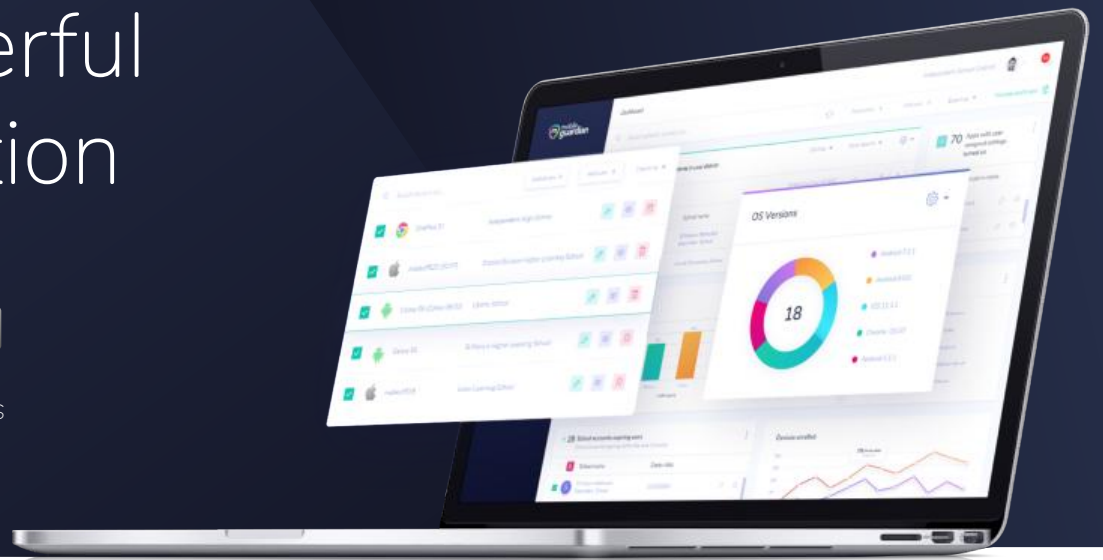
iOS



Chromebook



macOS



Whether you're a district with thousands of devices, or a home-school with just 5, Mobile Guardian simplifies your mobile device management (MDM) like never before.

With its unrivalled flexibility, the platform can facilitate any mobile learning strategy and gives you complete control over every device, no matter where it is. Designed for education, it makes managing countless devices as easy as possible.

Thanks to multi-OS support, you can manage all Android, Chromebook, iOS and macOS devices from a single dashboard. Finally there's a unified view of all your devices.



Cloud-based Control

Enrol devices, install and manage apps, wipe devices and reset device passwords without ever having to leave your desk. You'll be able to do it all, at the touch of a button and you'll no longer have to physically handle the device which may mean driving to a remote campus.



Off-site Filtering

Effortlessly extend web-filtering to all devices, even when they leave campus. Protect students whether they're at home, using mobile data on a field trip or using their mobile at a friend's house.



Teacher & Parent Controls

Easy-to-use, dedicated controls that empower teachers and save them valuable teaching minutes. Outside of school hours, hand over control to parents, with our Parentapp. Tools that work together to make your life easier.



BYOD

Remote enrollment, time and location-based policies, parental controls and off-site filtering ensure your BYOD program successfully fulfills your eSafety obligations.

Device & Student Enrollment

Multiple enrollment options to save you precious time.



Multiple enrollment options

No matter your device enrollment strategy, we can support it. We offer bulk enrollment through Apple School Manager (DEP), Apple Configurator 2, G Suite and Android EMM. We also support single device enrollment through QR codes and URLs.

Student enrollment

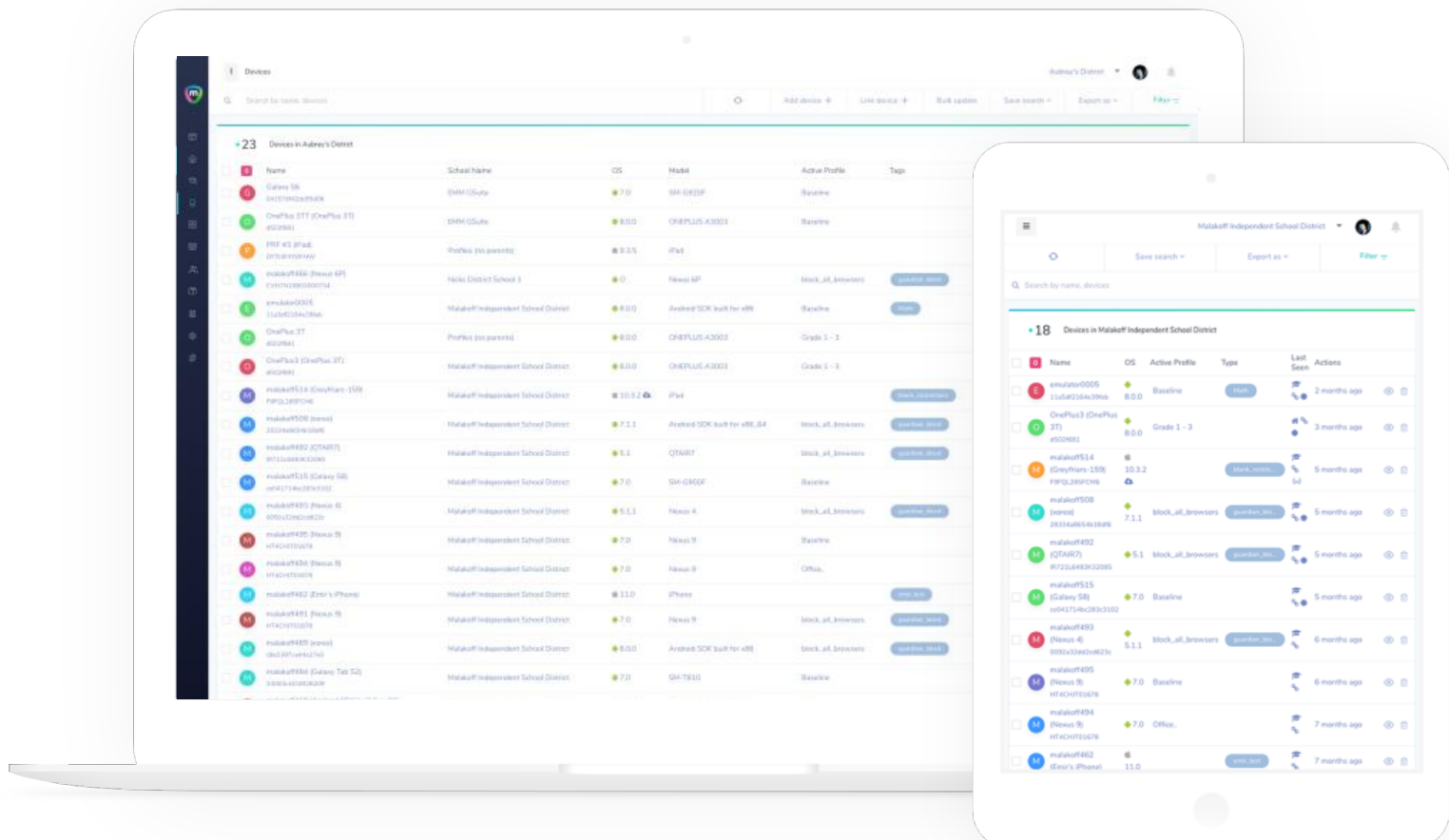
Save time and populate student records from your master data source. Sync student data from Apple School Manager (ASM), Active Directory (AD), Google Organizational Units (OUs) or a cvs import. You'll no longer need to waste precious time enrolling students individually. We're also continually adding SIS integrations upon request.

Seamless student linking

Use your student data to provide auto linking to device upon initial login. No matter what device the student is using, a record of their activity will be linked to the student. Inactive students can be automatically logged out of a shared device.

Accommodate student mobility

As a district with a large number of students, you'll know that students can change schools several times within a year. As students progress, with their devices, through the grades, or even to a new school, they will automatically have the correct restrictions assigned to their device.



Profiles, Restrictions & Configurations

Complete control, right down to the lowest level.



Cascading, granular control

With profile hierarchies, make changes at the district level, that will instantly cascade down to your schools. Take control right down to class level and lock devices into single app mode during testing.

Role-based control

Set up user roles and responsibilities so that your schools and teachers can only access the features or functions that they need to.

Dynamic restrictions

Whether the device is using school Wifi, public internet or mobile data, you can rest assured that your restrictions will always apply. No matter where the device is, your restrictions will be enforced.

Time & location based restrictions

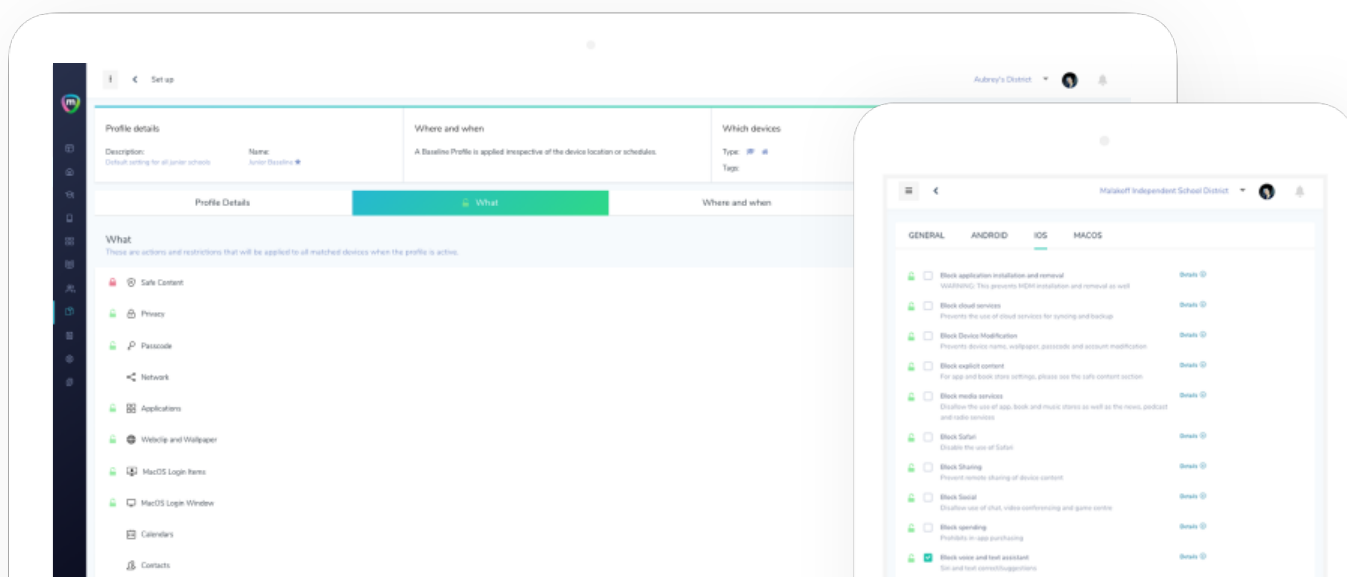
Switch device state based on time or location. Disable all distracting, social media apps from BYOD devices, on arrival at campus, for the duration of the school day. Personal apps will be available again once the school day is over.

Honour your Acceptable Usage Policy

Configure your restrictions across all devices and ensure your Acceptable Usage Policy (AUP) is always honoured throughout your district or school.

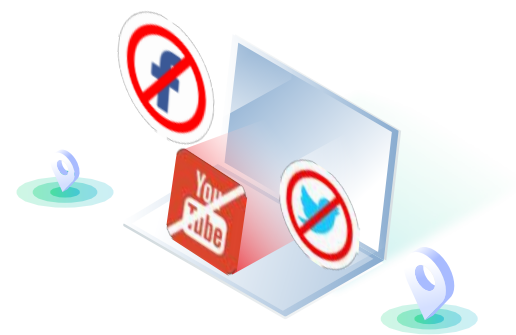
Access with groups

Save yourself precious time by grouping your devices intelligently. With Mobile Guardian, you can group according to device, subject, grade, class or any age you choose. Smart groups will make life a lot easier.



Applications & Content

Ensure that all device content is always relevant and age-appropriate.



Manage apps remotely

Save time by remotely installing apps on student devices. Search, tag and mass assign apps to both school- and home-owned devices from a central dashboard. Key applications can be configured to auto-install when a new device is enrolled.

Robust app filtering

Control all app-related actions on the device. Blacklist apps and customize the home screen and dock layouts. Set the device to single app mode for complete focus during lessons and state testing.

Web, Youtube & keyword filtering

Advanced web, Youtube and keyword filtering with the Mobile Guardian safe browser, ensure that your students only see age-appropriate content.

Location, location, location!

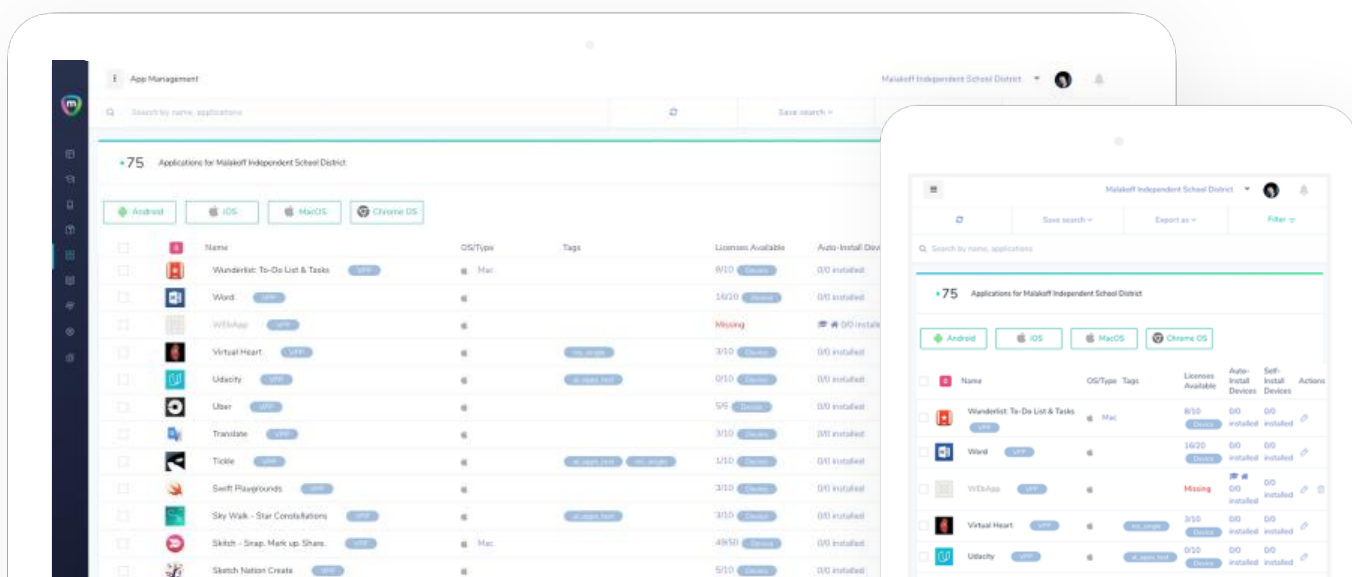
Set up your MDM to know where your devices are at all times. Track the device in real-time, and view its location history. Setup sophisticated geofences and schedule location-based restrictions.

Track lost or stolen devices

Identify lost or stolen devices quickly and set the wheels in motion to protect them. Remotely lock and wipe the device to keep thieves out. Be alerted when the stolen device comes online to improve chances of recovery.

Remote media distribution

Distribute media to devices at the touch of a button. Push content like website and Youtube links, PDFs, web clips and audio files.



Reports and Management

Find the exact information you need, right at your fingertips.



Fast, incident resolution

Speedily resolve issues with actionable insights on your dashboard. Customize alerts to notify you of issues and save time by automating operating software updates.

Audit report

Access detailed audit logs of mobile device activity in your district. View user and event activity, and use these reports to make strategic decisions.

Aggregated device usage insights

With in-depth device usage insights, you'll be able to understand exactly how your students use their devices. Monitor and view their browser history, see which apps they've installed and identify which sites they spend the most time on.

Inventory management

See which devices are assigned, to which student and the exact device location. View the device's entire history and quickly identify which devices are deployed, awaiting updates, ready to deploy or archived.

Advanced filtering and reports

Quickly identify devices that need attention. Be it a low battery, an unenrolled device or one that has gone offline, you'll be able to find it fast. Customize automated reports to get the exact data you need, when you need it.

Customized alerts

Customize every detail of the what, when and how of your alerts. Trigger alerts for low battery, low storage, or even when a device has left school grounds. Receive alerts on your dashboard, IM, or via email.

The screenshot shows a web interface for 'Audit logs' under the 'Reports' section. The page title is 'Audit logs' and it shows '+134 Audit logs'. The table has columns for 'Audit Log ID', 'Date', 'User', 'School', 'Event Category', and 'Event Action'. The data rows show various events such as user updates, certificate additions, and profile deletions.

Audit Log ID	Date	User	School	Event Category	Event Action
2750	2018-04-04 13:58:04	Ryan Smith	Aubrey's District	User	Ryan Smith (Aubrey's District) updated student Some Test (2916) from school Aubrey's District
2580	2018-03-28 08:52:51	EMM Test	EMM Test School	Certificate	EMM Test (EMM Test School) added a new Certificate, 1571753451.p12 for school EMM Test School
2579	2018-03-28 08:47:07	EMM Test	EMM Test School	Certificate	EMM Test (EMM Test School) added a new Certificate, e1efb1net.cer for school EMM Test School
2578	2018-03-28 08:10:55	EMM Test	EMM Test School	Certificate	EMM Test (EMM Test School) added a new Certificate, e1efb1net.cer for school EMM Test School
2493	2018-03-26 12:51:59	Aubrey Livesey	Profiles (no parents)	Profile	Aubrey Livesey (Profiles (no parents)) deleted payload for fhschool_name%
2492	2018-03-26 12:42:04	Aubrey Livesey	Profiles (no parents)	Profile	Aubrey Livesey (Profiles (no parents)) updated restrictions payload for Profiles (no parents)
2490	2018-03-26 12:42:03	Aubrey Livesey	Profiles (no parents)	Profile	This content has been deleted.
2491	2018-03-26 12:42:03	Aubrey Livesey	Profiles (no parents)	Profile	Aubrey Livesey (Profiles (no parents)) updated personal/hotspot payload for Profiles (no parents)
2478	2018-03-26 12:02:25	Aubrey Livesey	Profiles (no parents)	Profile	Aubrey Livesey (Profiles (no parents)) updated Testing (profile details) profile for Profiles (no parents)

We've taken care of all your MDM pain points

Mobile Guardian is a feature-rich solution, designed for the education ecosystem. The powerful platform gives you unparalleled control and visibility over all your mobile devices. Its robust feature set and flexible MDM controls tackle your most pressing pain points. Once enrolled, each and every device is managed, monitored and completely secure. No matter your mobile learning strategy, Mobile Guardian has it covered.

Powerful features aside, this is why schools love Mobile Guardian.

It's easy to switch

We've made it as simple as possible to switch to Mobile Guardian. We've got a migration guide, multiple enrollment options and our support team is on standby to help.

We offer Zero-Day support

We support all OS releases the very day that they launch. This means that we've got all your devices covered from the very start.

Our world class support

Our friendly support team offers fantastic support and you'll never feel alone or unsupported. There's also an online knowledge center, full of helpful articles, videos and tutorials.

Always ahead of the curve

We're continually adding functionality and engaging with our customers. We're here to ensure that our mobile device management platform meets your unique needs and remains the best in the education market.

